

C13\_1024\_CD2Cl2 {F:\bruker600data} CTM 2

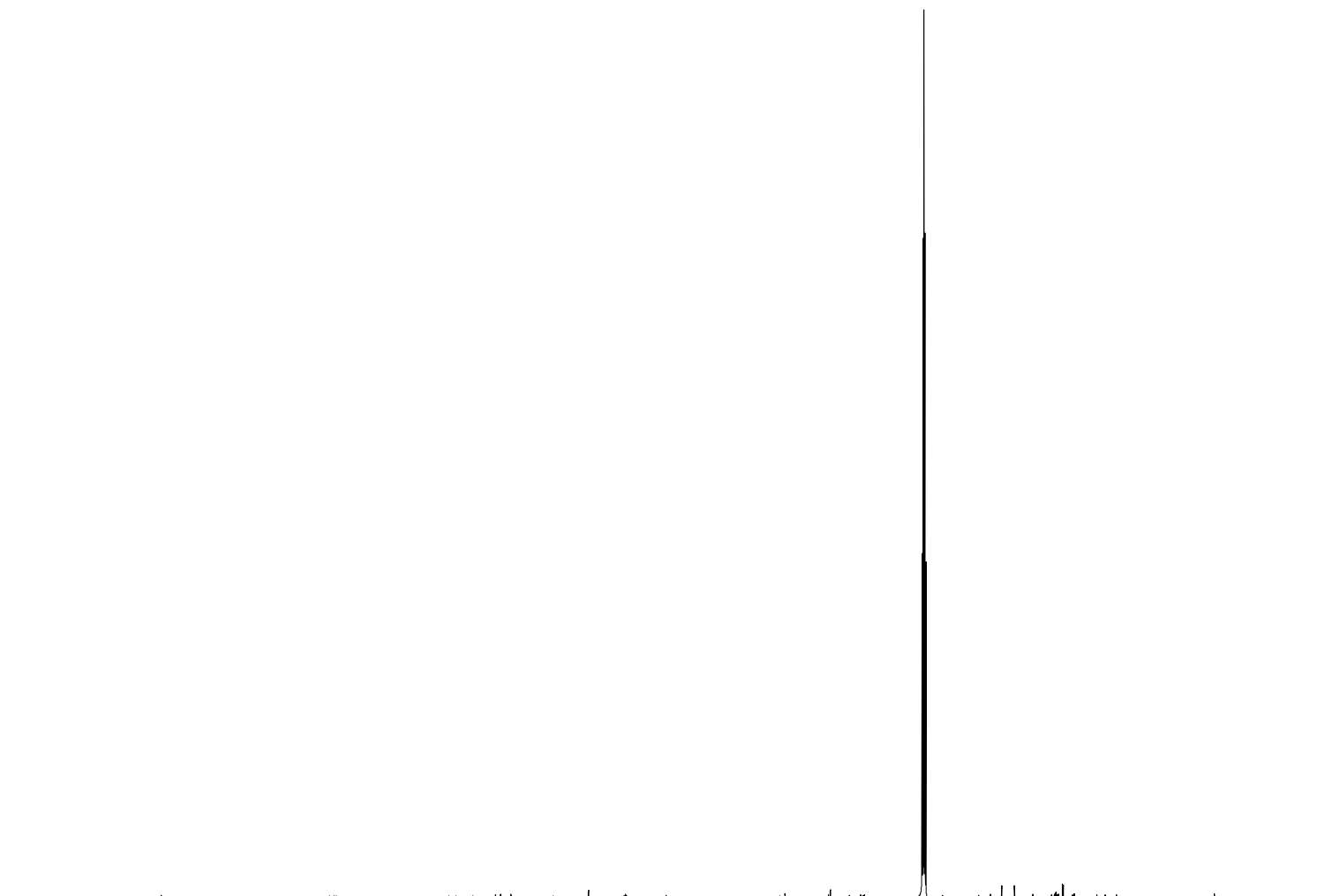
191.86  
161.36  
160.53  
160.20  
160.09  
158.03  
155.70  
146.89  
139.69  
138.43  
135.36  
134.78  
133.66  
131.26  
130.29  
128.81  
128.41  
120.73  
114.35  
107.89  
107.80  
107.67  
107.52  
107.40  
100.27  
79.62  
78.69  
70.80  
70.46  
67.03  
64.94  
64.57  
64.45  
64.30  
53.81  
53.63  
53.45  
53.27  
53.09  
50.10  
43.51  
41.43  
39.32  
37.04  
33.69  
30.33  
29.83  
29.77  
29.62  
29.57  
29.53  
29.42  
29.29  
29.18  
29.02  
28.99  
28.31  
28.16  
27.16  
26.69  
26.49  
26.22  
22.07  
20.61  
18.54  
0.75



Current Data Parameters  
NAME CTM1574A FULL CHAR  
EXPNO 11  
PROCNO 1

F2 - Acquisition Parameters  
Date\_ 20170531  
Time 3.10 h  
INSTRUM spect  
PROBHD Z107910\_0015 (  
PULPROG zgpg30  
TD 65536  
SOLVENT CD2Cl2  
NS 1024  
DS 4  
SWH 36057.691 Hz  
FIDRES 1.100393 Hz  
AQ 0.9087659 sec  
RG 322  
DW 13.867 usec  
DE 18.64 usec  
TE 295.2 K  
D1 2.00000000 sec  
D11 0.03000000 sec  
TD0 1  
SFO1 150.9178981 MHz  
NUC1 13C  
P1 10.00 usec  
PLW1 31.50000000 W  
SFO2 600.1324005 MHz  
NUC2 1H  
CPDPRG[2] waltz64  
PCPD2 70.00 usec  
PLW2 20.00000000 W  
PLW12 0.40816000 W  
PLW13 0.20530000 W

F2 - Processing parameters  
SI 32768  
SF 150.9028090 MHz  
WDW EM  
SSB 0  
LB 1.00 Hz  
GB 0  
PC 1.40



200 180 160 140 120 100 80 60 40 20 0 ppm